

Panel Directional Antenna

for 802.11b/g

Version 1

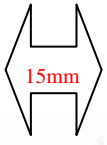
APG-2418-1

Electrical Specification:

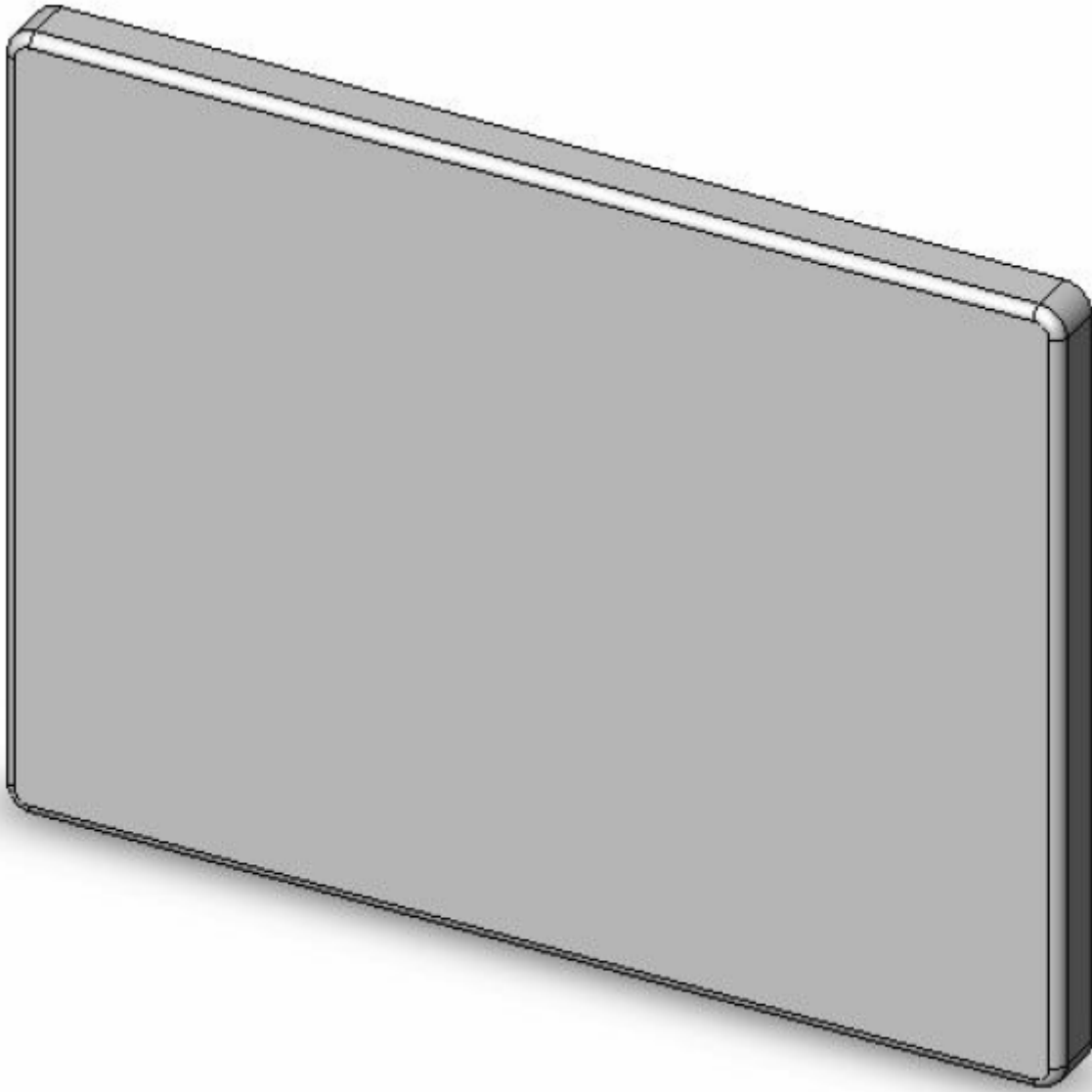
Frequency	2.4~2.5GHz
Part Number	APG-2418-1
Polarization	Linear
V.S.W.R.	1 : 1.5 Max
Impedance	50 OHMS $\pm 5 \Omega$
Gain	18 dBi
Power handling	10W Max
Front to back ratio	N/A
HPBW / horizontal	30°
HPBW / vertical	20°

MECHANICAL SPECIFICATION

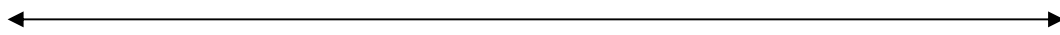
Connector Type	N Type Female
Length	270×200×15mm
Weight	310 g
Radome color	white
Radome material	PC+ABS



15mm



200mm



270mm

